



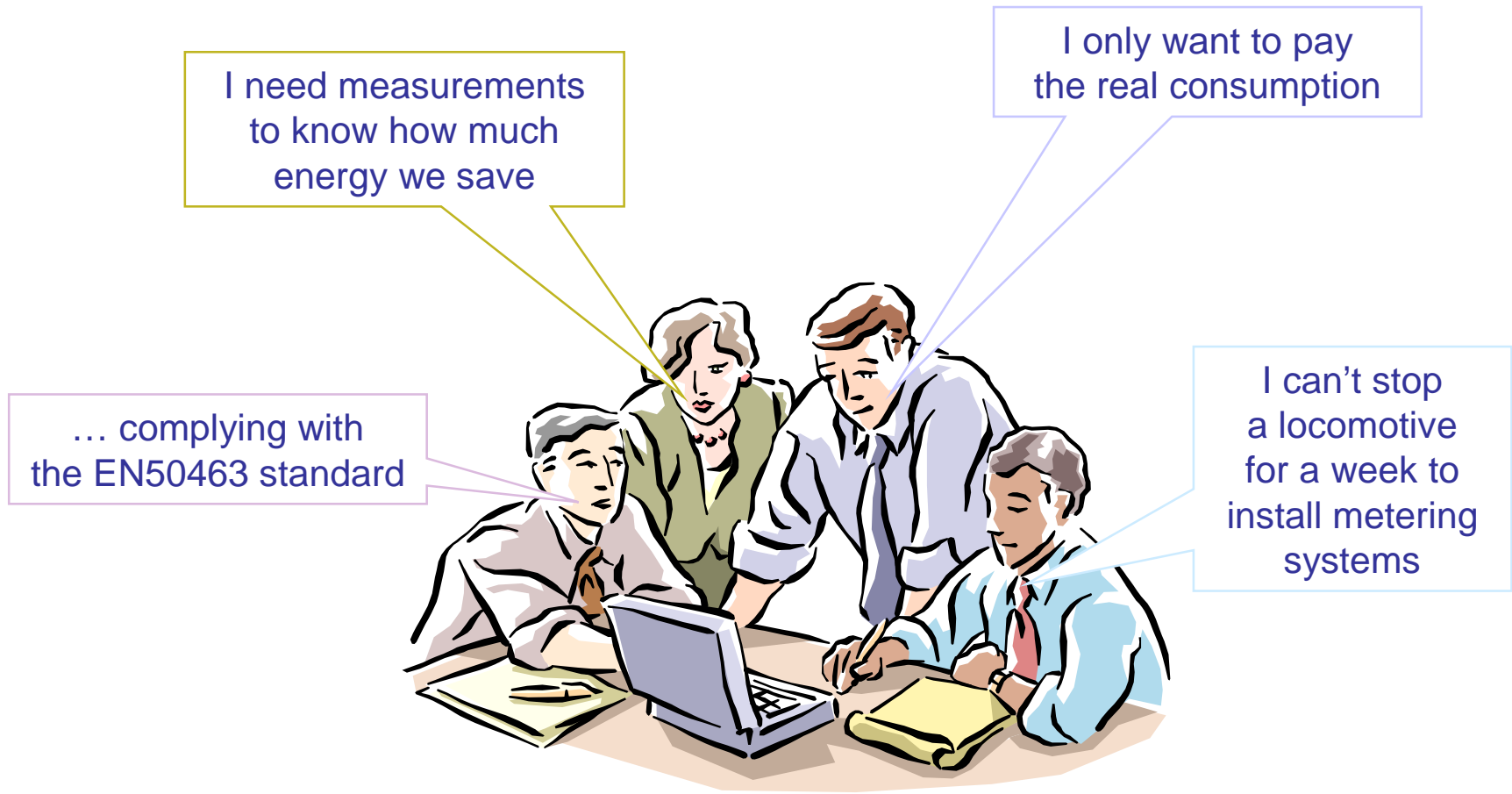
# Metering technology

for traction energy consumption

Philippe Aubin

Jean-Pierre Guy

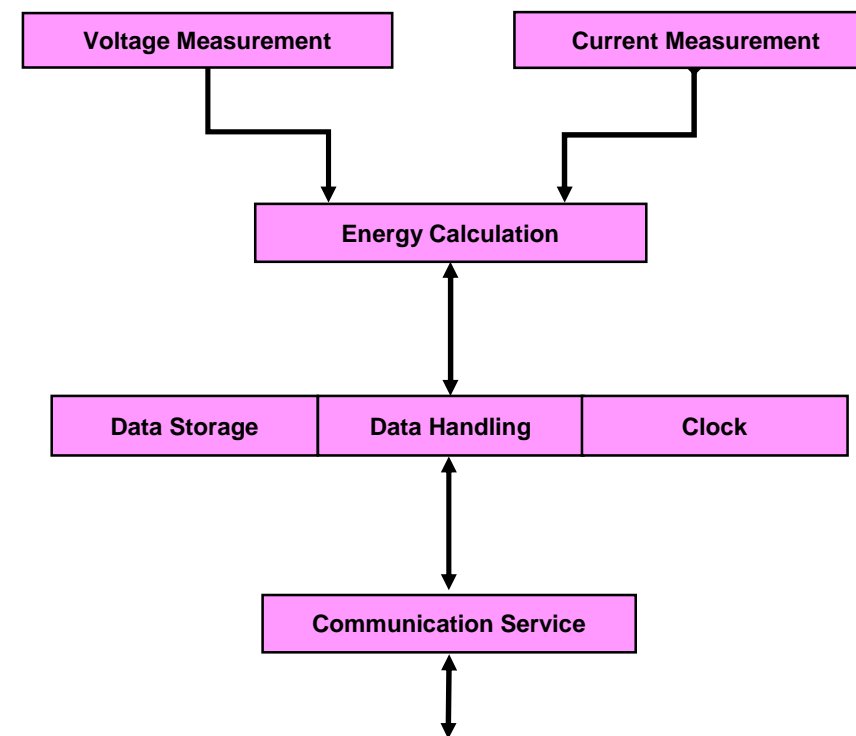
09/2009



09/2009

▶ **New EN50463 standard**

- ▶▶ **Supersedes the EN 50463:2007**
- ▶▶ **In line with the new TSI**
- ▶▶ **Scope is extended**
  - **Part 1: General**
  - **Part 2: Energy Measuring**
  - **Part 3: Data Handling**
  - **Part 4: Communication**
  - **Part 5: Conformity Assessment**
- ▶▶ **System and functional approach**
  - **Not a product description**
  - **Allows different product architectures**

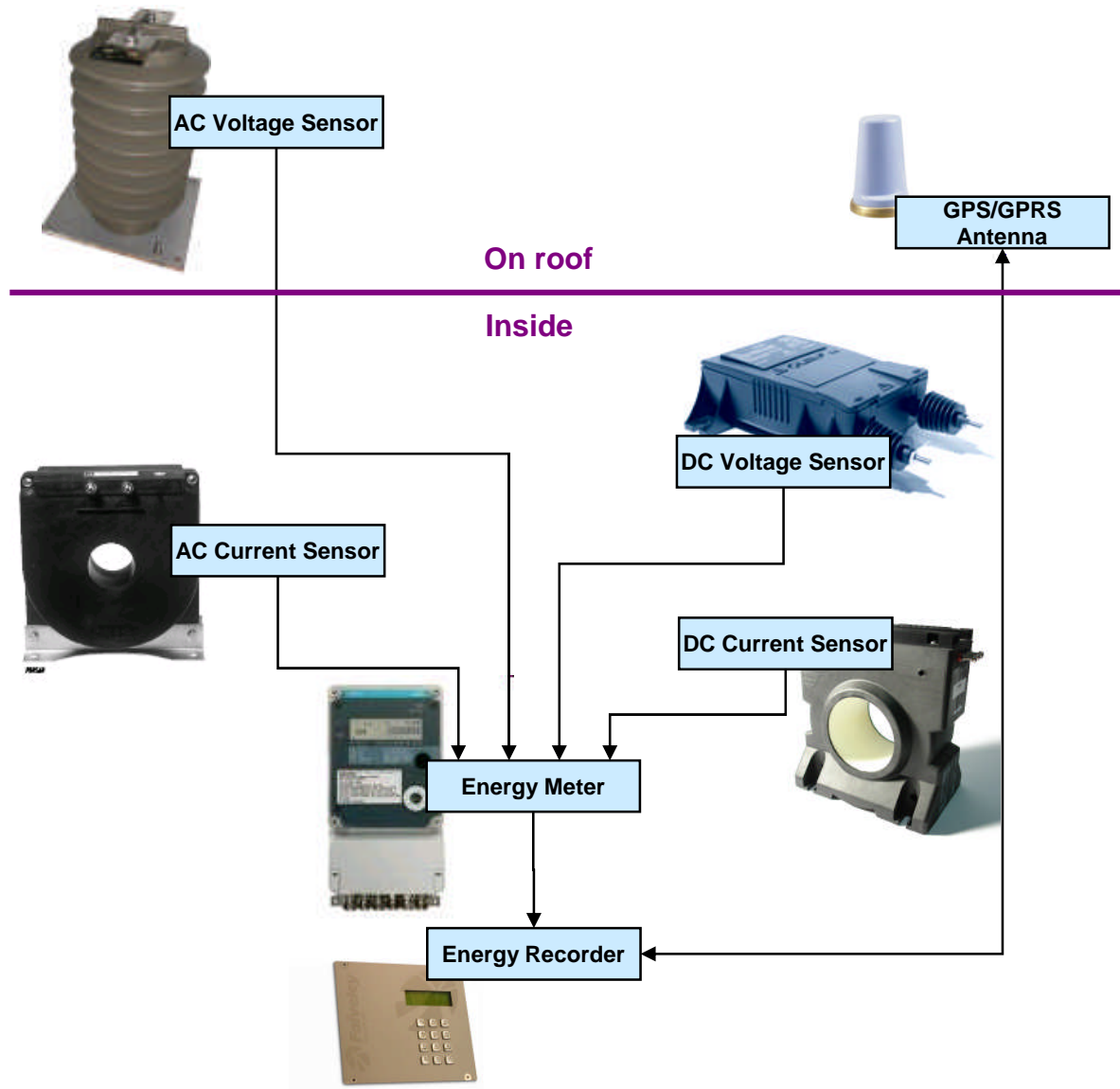


Functional block and data flow diagram

09/2009

▶ **Current architecture**  
Based on industrial architecture

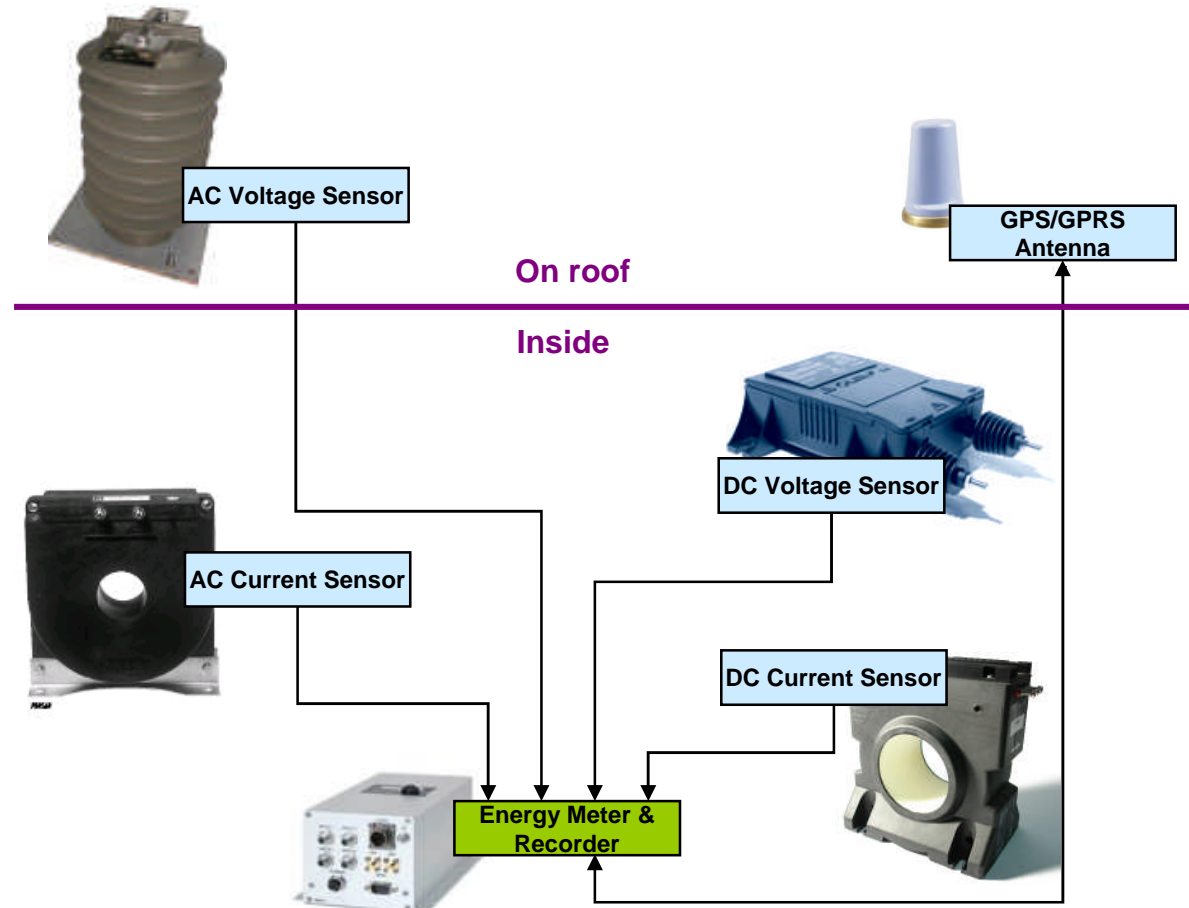
- ▶▶ **Analogue Sensors**
  - Includes the high voltage insulation
- ▶▶ **Energy Meter**
  - Measures voltages and currents
  - Calculates energies (active/reactive, in/out)
  - Stores load profiles versus date and time
- ▶▶ **Energy Recorder**
  - Adds the location to the load profiles
  - Stores and keeps the last 60 days data
  - Transmits data to the central database



09/2009

▶ **Current architecture**  
Variation

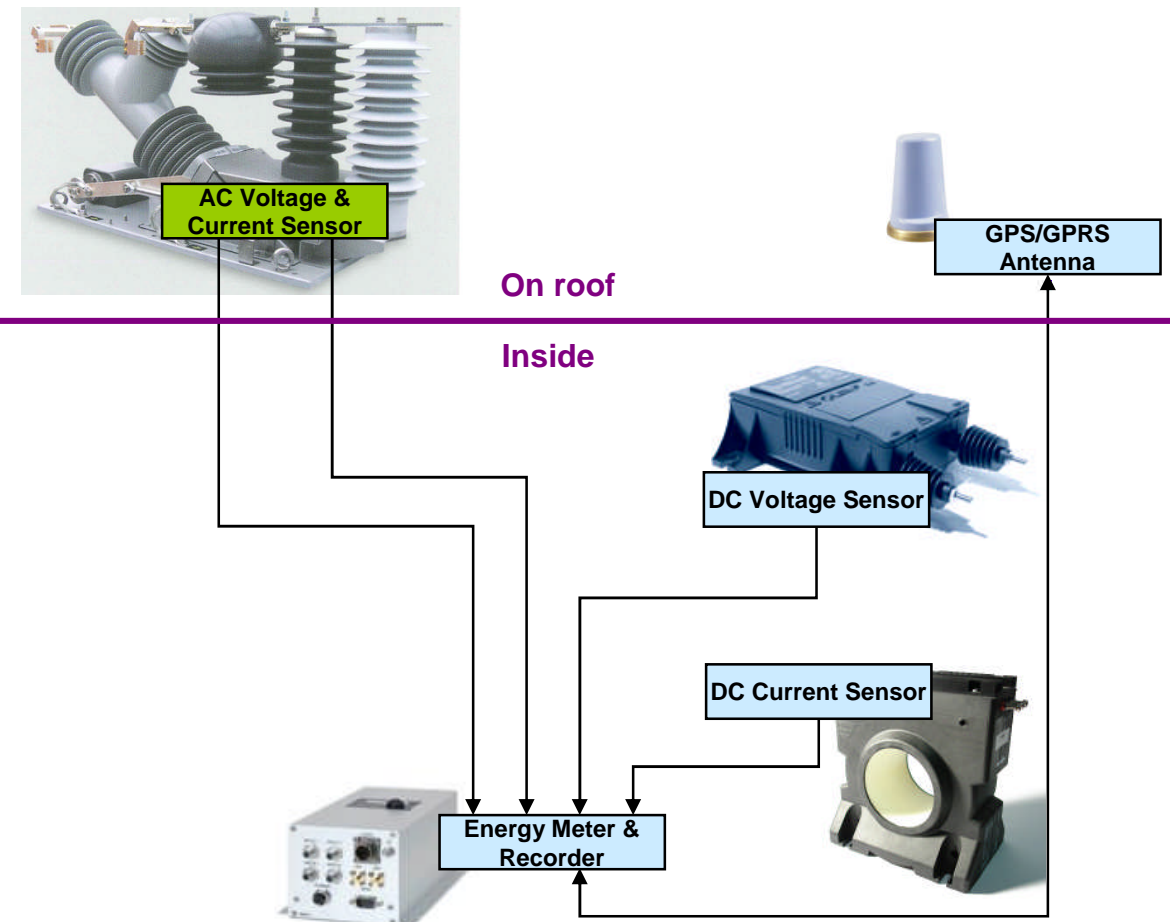
▶▶ Energy Meter and Energy Recorder are merged into one device



09/2009

► **Sensors in the  
Circuit Breaker**

- AC voltage sensor and AC current sensor are included into the main AC circuit breaker



09/2009

▶ **Energy measurement on the roof**

- ▶▶ No frame modification
- ▶▶ Replace existing insulators, Quick and simple to install

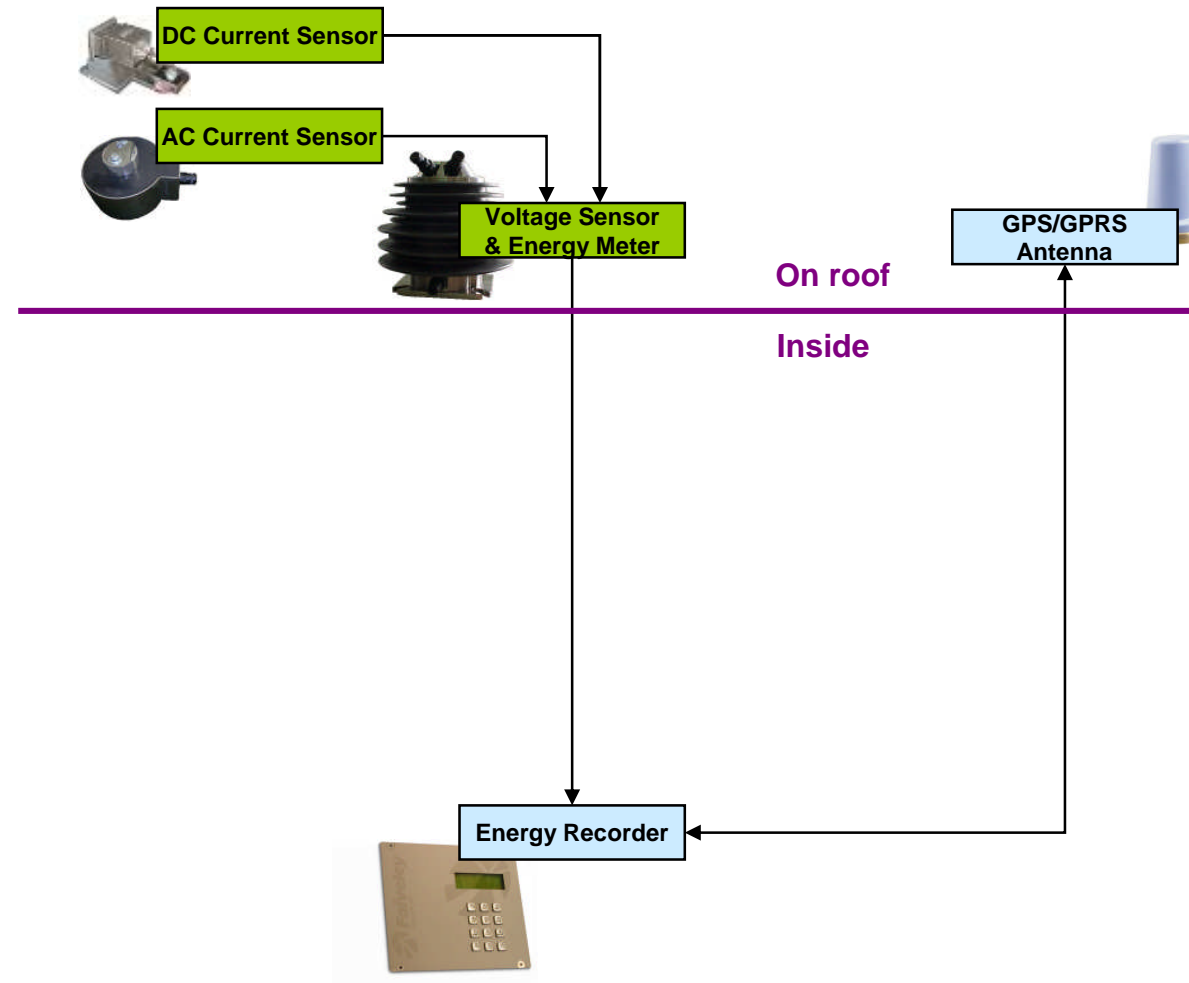


• On a pantograph

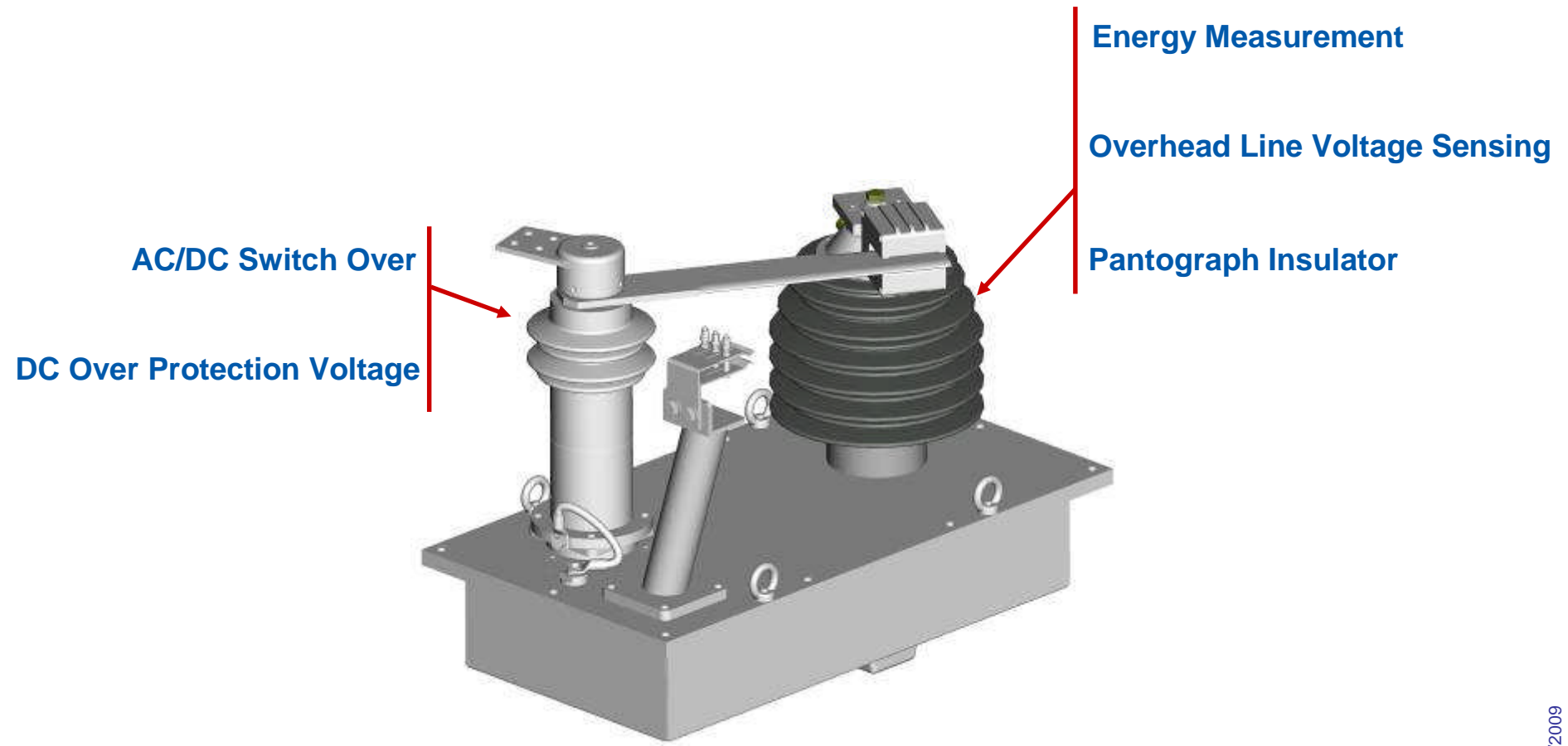


• On a bus bar

- ▶▶ Sensor with redundancy built-in

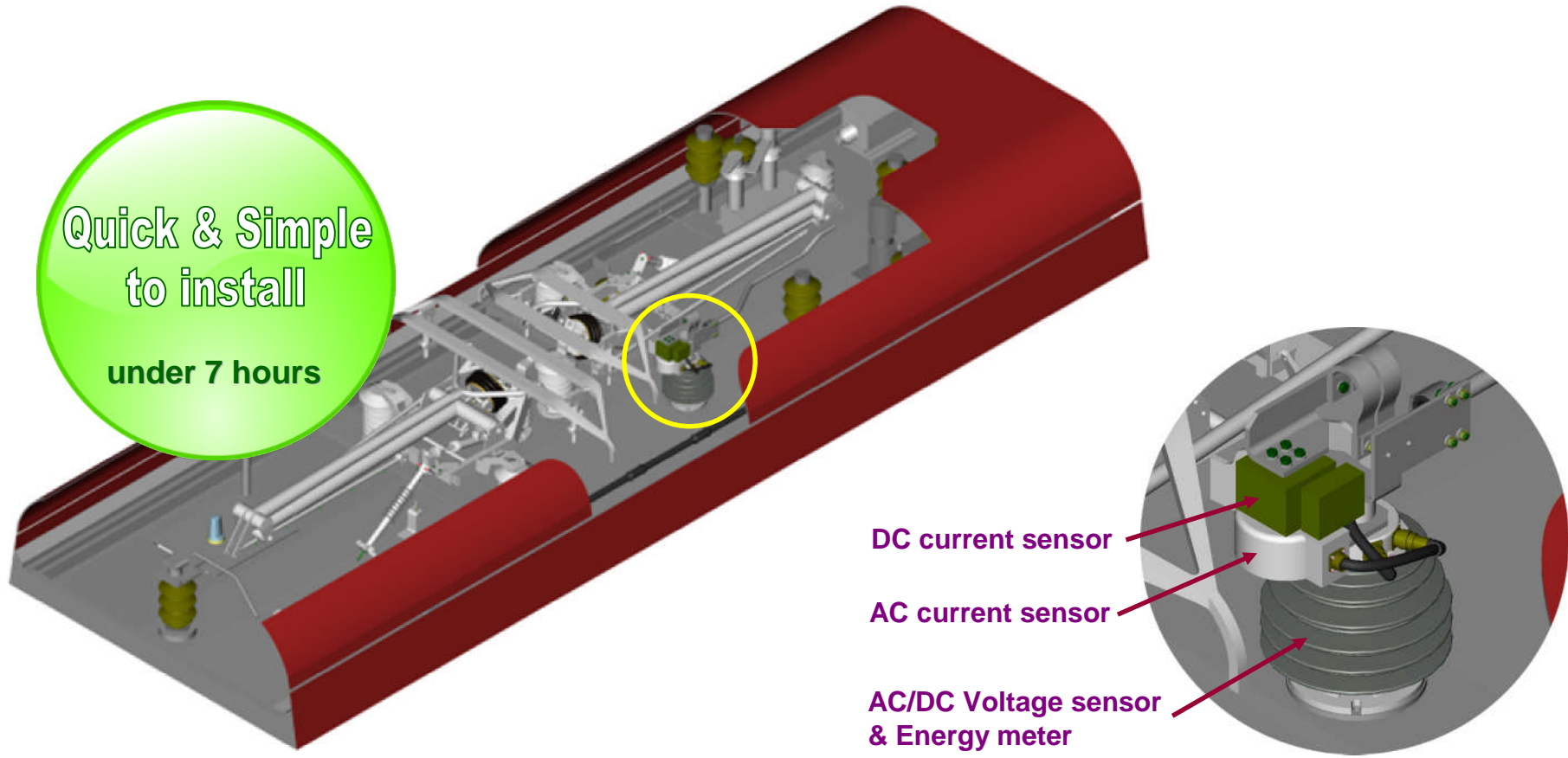


▶ **Compact & Integrated systems on the roof**



09/2009





**Thank you for your attention**